



Series L

Rotary Lobe Pumps for when simple is best



SSP Series L stainless steel rotary lobe pumps provide the simple solution to many processes, fulfilling a wide range of application requirements throughout various industries worldwide.

Series L pumps are EHEDG accredited (European Hygienic Equipment Design Group) for the highest level of cleanability.

Handling from low to high viscosity pumped media the characteristic smooth, low shear pumping action is ideal for delicate media and where organic solids in suspension, creams, froths, gels, emulsions and mixtures are to be pumped.

User Benefits

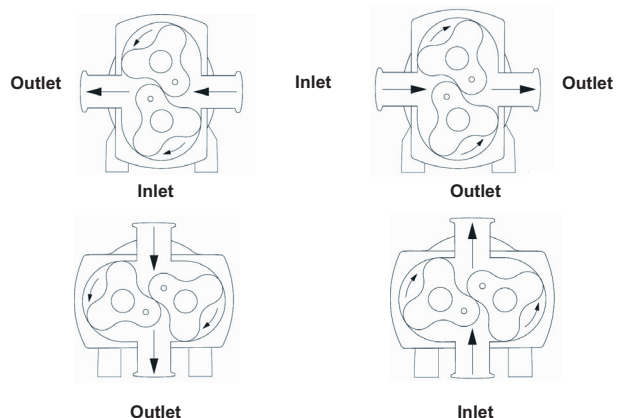
- High efficiency
- Low energy consumption
- Compact size
- Smooth flow
- Reversible operation
- Low shear pumping
- Minimal pumped media agitation
- Easy maintenance
- Hygienic design
- EHEDG accreditation

Series L pumps are suitable for CIP (Cleaning In Place) and conform to USA 3A Sanitary Standard.



Operation

The positive displacement of the Series L pump is provided by non-contacting, contra rotating tri-lobe rotors within a fully swept pump chamber. All Series L pumps are capable of bi-rotational flow without modification.



Performance

The Series L pump range has six pump head displacements ranging from 0.17 litres/rev to 0.82 litres/rev.

- Flow rates up to 48 m³/h
- Differential pressures up to 8 bar
- Port sizes from 40 mm to 80 mm diameter

High Volumetric Efficiency – The Series L pump offers high efficiency transfer of low, medium and high viscosity pumped media. This important aspect of performance is achieved by maintaining high accuracy and repeatability of component part manufacture, thereby maximising shaft rigidity and minimising the effects of thermal expansion within the pump gearbox. This combination allows the optimum pump head geometry to be achieved which, in turn maximises volumetric efficiency.

Low NPSH – The Series L pump has full through-bore inlet and outlet ports to International Standards. This reduces inlet and outlet port losses, thereby lowering NPSH requirements.

Basic Design

The Series L pump range provides for greater application flexibility and cost effective easy maintenance.

Pumphead – All metallic pumped media wetted components are manufactured in 316L stainless steel. The Series L in standard specification has tri-lobe rotors allowing the pump to be operated at a maximum temperature of 130°C for both process and CIP.

Shafts – Manufactured from high strength duplex stainless steel.

Gearbox – The Series L pump has a universal gearbox design which gives the flexibility of mounting pumps with the inlet and outlet ports in either a vertical or horizontal plane by simply changing the foot position.

A stainless steel gear canister and electroless nickel plated bearing housing provides a clean, paint free corrosion resistant external finish.

Clearances – No rotorcase shimming is required as shims are factory set located in the bearing housing. This results in easy maintenance and rotor interchangeability.

Pump Model	Inlet and Outlet Connection Size mm	Displacement litres/rev	Differential Pressure bar	Maximum Speed rev/min	Weight Bare Shaft Pump kg
L2 - 0017	40	0.17	8	1000	21
L2 - 0021	40	0.21	8	1000	22
L3 - 0032	50	0.32	8	1000	34
L3 - 0040	50	0.40	8	1000	35
L4 - 0064	65	0.64	8	1000	60
L4 - 0082	80	0.82	8	1000	63

Specification Options



EasyFit Pumped media seals

All sealing options are completely front loading and fully interchangeable without the need for additional housings or pump component changes. This enhances cleanability, simplifies access and significantly reduces maintenance downtime.

Single or single flushed mechanical seals are available and include seal face options of carbon, stainless steel or silicon carbide.

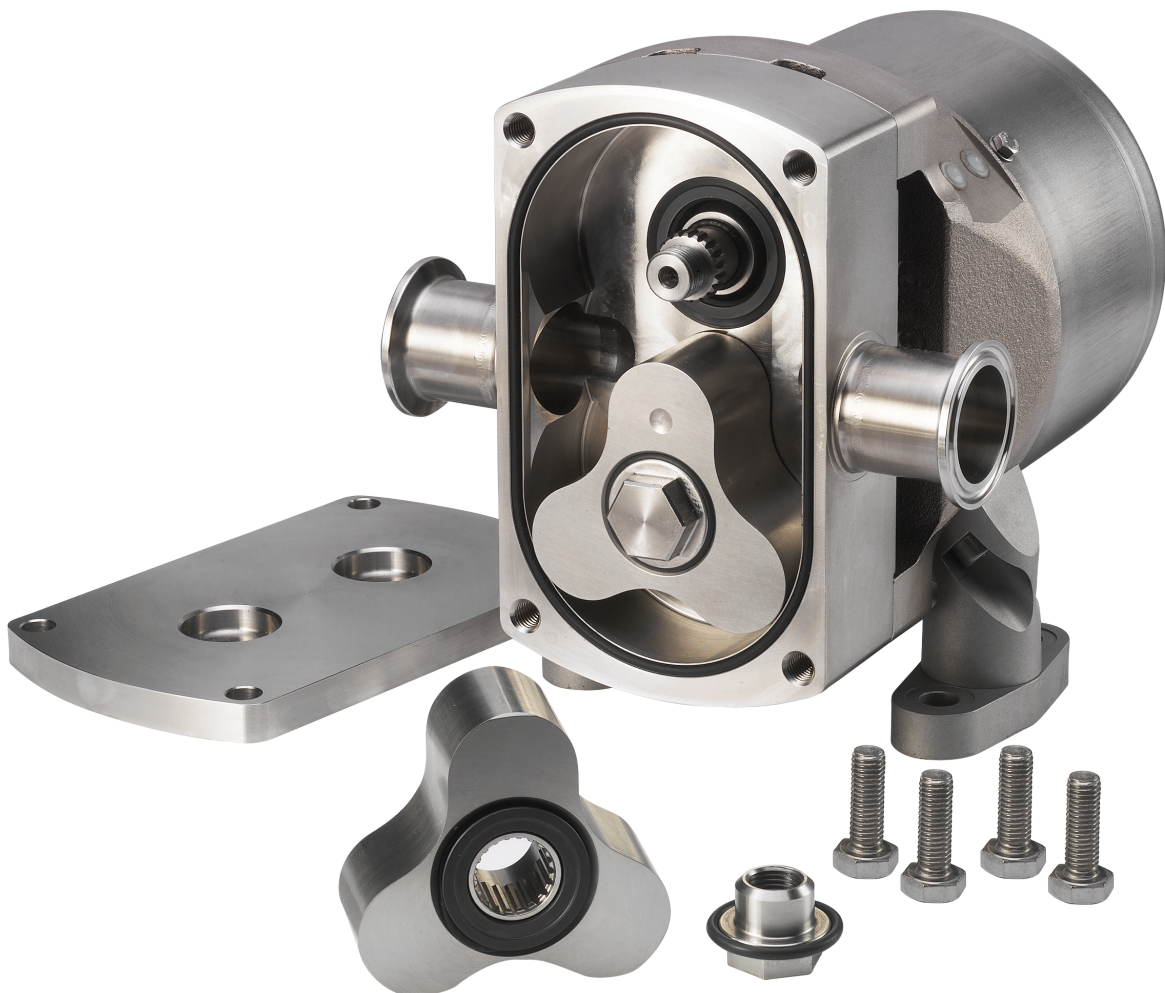
Pumped media wetted elastomers are EPDM or FPM, both FDA conforming.

Motorised pump units

Pumps may be supplied fully motorised with fixed speed geared electric motor or variable speed drives mounted on mild steel or stainless steel baseplates.

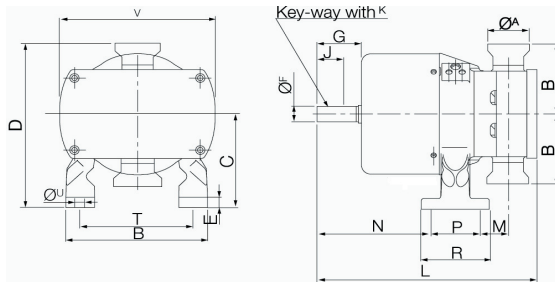
Connections

Screwed male connections to major standards including DIN11851 to BS4825, ISS/IDF, RJT, SMS and Tri-clamp.

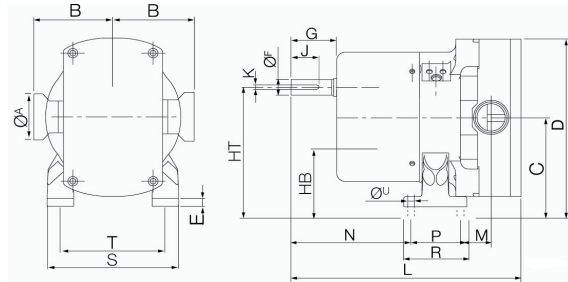


Bareshaft Pump Dimensions

Vertically ported



Horizontally ported



Vertically ported

All dimensions in mm

Pump Model	Nominal Connection Size A	B	C	D	E	F	G	J	K	L	M	N	P	R	S	T	U	V
L2 - 0017	40	96	120	216	15	20	50	32	6	275	35	139	60	90	162	124	12	191
L2 - 0021	40	96	120	216	15	20	50	32	6	286	44	139	60	90	162	124	12	191
L3 - 0032	50	120	136	256	15	24	50	40	8	304	35	157	64	95	192	150	12	230
L3 - 0040	50	120	136	256	15	24	50	40	8	316	47	157	64	95	192	150	12	230
L4 - 0064	65	130	159	289	20	30	55	40	8	370	51	161	100	145	235	180	14	270
L4 - 0082	80	138	159	297	20	30	55	40	8	386	60	161	100	145	235	180	14	270

Horizontally ported

All dimensions in mm

Pump Model	Nominal Connection Size A	B	C	D	E	F	G	HB	HT	J	K	L	M	N	P	R	S	T	U
L2 - 0017	40	96	120	216	15	20	50	84	156	32	6	275	35	139	60	90	162	124	12
L2 - 0021	40	96	120	216	15	20	50	84	156	32	6	286	44	139	60	90	162	124	12
L3 - 0032	50	120	136	251	15	24	50	92	180	40	8	304	35	157	64	95	192	150	12
L3 - 0040	50	120	136	251	15	24	50	92	180	40	8	316	47	157	64	95	192	150	12
L4 - 0064	65	130	159	294	20	30	55	106	212	40	8	370	51	161	100	145	235	180	14
L4 - 0082	80	138	159	294	20	30	55	106	212	40	8	386	60	161	100	145	235	180	14

P/108/0802

the information contained herein is correct at the time of issue, but may be subject to change without prior notice.