

VIKING® HEAVY DUTY PUMPS

SERIES 335 AND 4335

“P” SIZE

Section	SP2100
Page	1
Issue	B

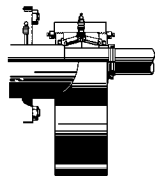
FEATURES

VIKING'S ANSWER FOR BARGE, TANKER AND TERMINAL LOADING AND UNLOADING . . .



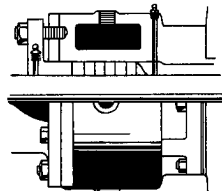
SERIES 335 Unmounted Pump
1500 GPM (341 m³/hr) “P” Size

① Pressure Range	to 125 PSI (9 BAR)
① Temperature Range	-60°F. to +450°F. (-51°C. to +232°C.)
① Viscosity Range	100 SSU (21 cSt) to 25,000 SSU (5,500 cSt) ③



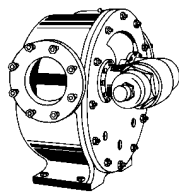
INTEGRAL THRUST BEARING

This Series 335 and 4335 “P” size pump is equipped with pedestal supported rotor thrust bearing. This results in a fully rigid and positive alignment and eliminates the need of a second shaft support. Rotor adjustment is provided by means of two adjusting nuts.



JACKETED ROTOR BEARING SLEEVE

The “P” size Series 335 and 4335 pump comes standard equipped with a single piece, jacketed, rotor bearing sleeve. Generous jacketed area is suitable for steam or other heating or cooling media. Jacket equipped with handy steam or cooling connections.



COMBINATION JACKETED AND RELIEF VALVE HEAD

The “P” size Series 335 and 4335 pump features a combination jacketed and relief valve type head as standard equipment. Valve is standard and can be turned end for end when reversing the pump rotation. **VALVE CAP MUST ALWAYS POINT TOWARD THE SUCTION PORT.**

② **G.P.M. 1500 on 100 SSU**
(m³/hr 341 on 21 cSt)
Rated at 230 RPM

The Viking Series 335 and 4335 heavy-duty “P” size pump is built for bulk handling of oils, fuels, asphalt and similar liquids. This large size is popular for barge, tanker and terminal loading and unloading since the pump is self-priming and capable of stripping tanks without additional equipment.

The Series 335 and 4335 heavy-duty “P” size pump is furnished with horizontal ports. Other port arrangements can be furnished on special order. This pump is furnished with thrust bearing pedestal support and over-pressure relief valve mounted on the head as standard equipment. Both packed and mechanical seal types are available. Standard mechanical seal equipped with Buna-N elastomer carbon rotating and Ni-Resist stationary faces.

① Values shown represent maximums. Some special construction or consideration may be required before a cataloged pump can be applied to an application involving maximum pressure, temperature and/or viscosity.

② Nominal capacities based on handling thin liquids at low pressures.

③ For applications with viscosities outside this range, consult factory with details.

Metric conversions are based on US measurements and rounded to the nearest whole number.

Section	SP2100
Page	2
Issue	B

VIKING® HEAVY DUTY PUMPS

SERIES 335 AND 4335

“P” SIZE

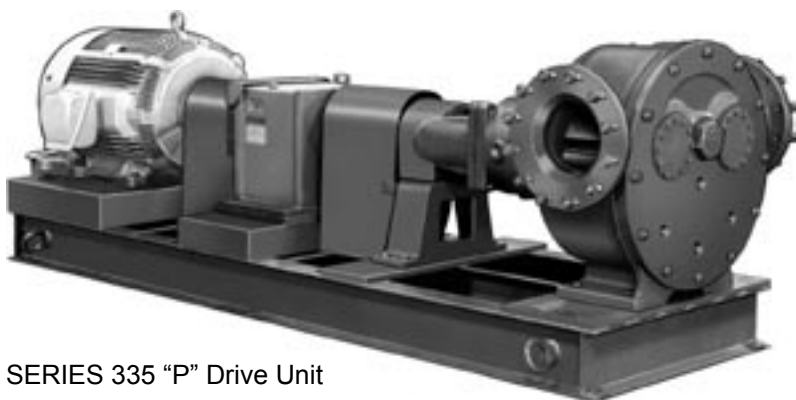
UNMOUNTED AND MOUNTED PUMPS

CONSTRUCTION

Pump Construction	Casing	Rotor Bearing Sleeve	Head	Rotor	Idler	Rotor Shaft and Idler Pin	② Bushings		Internal Relief Valve
							Packed	Mechanical Seal	
Standard Construction	Iron	Iron	Iron	Iron	Iron	Steel	Bronze	Carbon Graphite	Iron

SPECIFICATIONS — UNMOUNTED PUMP

Model Number	① Port Size	⑤ Nominal Pump Rating		Maximum Hydrostatic Pressure	②③⑥ Maximum Recommended Discharge Pressure Handling 100 SSU Liquid at Nominal Rated Speeds	⑦ Maximum Recommended Temperature For Cataloged Pump °F. (°C.)	⑧ Maximum Temperature / Pressure of Fluid In Jackets				Approx. Shipping Weight With Valve		
		GPM (m³/hr)	RPM				PSIG (BAR)	PSIG	Steam (Sat.)			Heat Transfer Oil	
Packed	Mech. Seal	Inches	GPM (m³/hr)	RPM	PSIG (BAR)	PSIG	Packed	Mech. Seal	Temp. °F. (°C.)	Pressure PSIG (BAR)	Temp. °F. (°C.)	Pressure PSIG (BAR)	Pounds (KG)
P335	P4335	10	1500 (341)	230	400 (28)	125	300 (149)	225 (107)	365 (185)	150 (10)	450 (232)	150 (10)	2700 (1226)



SERIES 335 “P” Drive Unit

The Viking Heavy-Duty Series 335 (packed) and 4335 (mechanical seal) “P” size pump is available in the “P” drive arrangement.

This “P” Drive Heavy-Duty Unit is mounted on a structural steel base, as illustrated. The pump is mounted with separate heavy-duty reducer and is connected through flexible couplings between pump, reducer and motor. Coupling guards, as illustrated, are standard equipment.

Dimensions for “P” Drive Units—Consult factory.

Performance Data for “P” Drive Units—See Pages 3 and 4 of this SP.

SPECIFICATIONS — “P” DRIVE

Model Number	① Port Size	⑤ Nominal Pump Rating		Maximum Hydrostatic Pressure	②③⑥ Maximum Recommended Discharge Pressure Handling 100 SSU Liquid at Nominal Rated Speeds	⑦ Maximum Recommended Temperature For Cataloged Pump °F. (°C.)	⑧ Maximum Temperature / Pressure of Fluid In Jackets				Approx. Shipping Weight With Valve		
		GPM (m³/hr)	RPM				PSIG (BAR)	PSIG	Steam (Sat.)			Heat Transfer Oil	
Packed	Mech. Seal	Inches	GPM (m³/hr)	RPM	PSIG (BAR)	PSIG	Packed	Mech. Seal	Temp. °F. (°C.)	Pressure PSIG (BAR)	Temp. °F. (°C.)	Pressure PSIG (BAR)	Pounds (KG)
P335P	P4335P	10	1500 (341)	230	400 (28)	125	300 (149)	225 (107)	365 (185)	150 (10)	450 (232)	150 (10)	2700 (1226)

- ① Flanged ports are suitable for use with 125# ANSI cast iron or 150# ANSI steel companion flanges or flanged fittings.
- ② External force feed lubrication to bushings is recommended when pump might run dry or when a thin liquid flush cycle is used or when pumping high viscosity liquids.
- ③ For maximum recommended discharge pressures when handling other viscosities and/or at other speeds, see performance curves. Performance curves also show preferred construction.
- ④ Buna-N elastomer used in mechanical seal of Series 4335 pumps. On applications

- above 15,000 SSU (3,300 cSt), provide details for recommendation.
- ⑤ Nominal capacities based on handling thin liquids at low pressure.
- ⑥ If suction pressure exceeds 50 PSIG (3 BAR), consult factory with details.
- ⑦ With special construction, temperatures to 450° F. can be handled. Consult factory with details.
- ⑧ Jacketed rotor bearing sleeve (stuffing box) and jacketed head are standard equipment.

Metric conversions are based on US measurements and rounded to the nearest whole number.

VIKING® HEAVY DUTY PUMPS

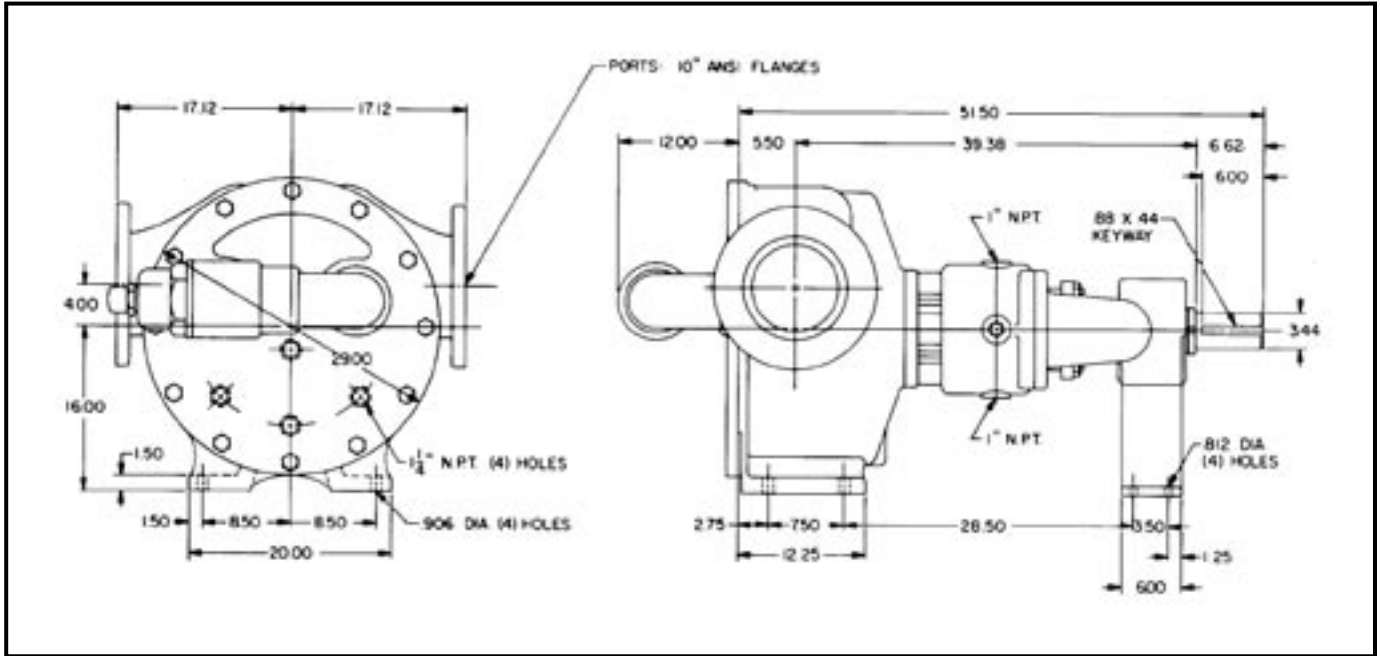
SERIES 335 AND 4335

“P” SIZE

Section	SP2100
Page	3
Issue	B

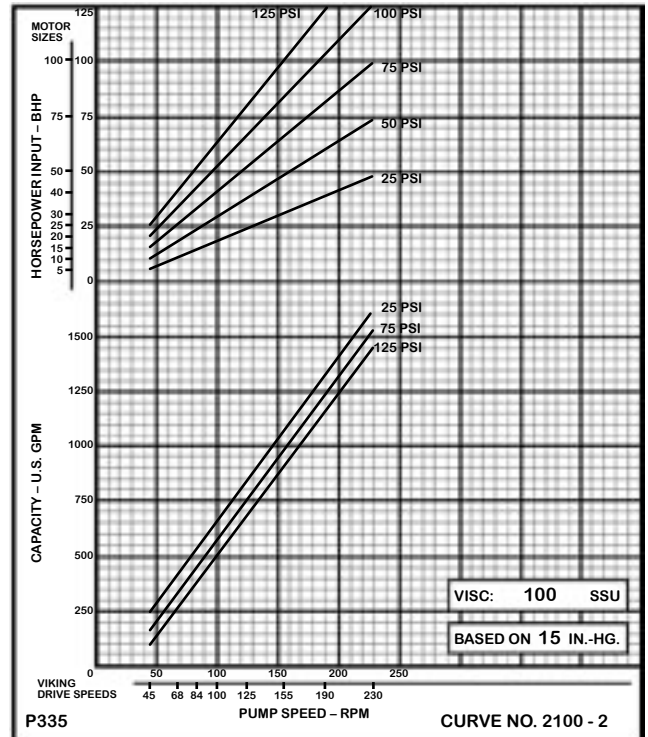
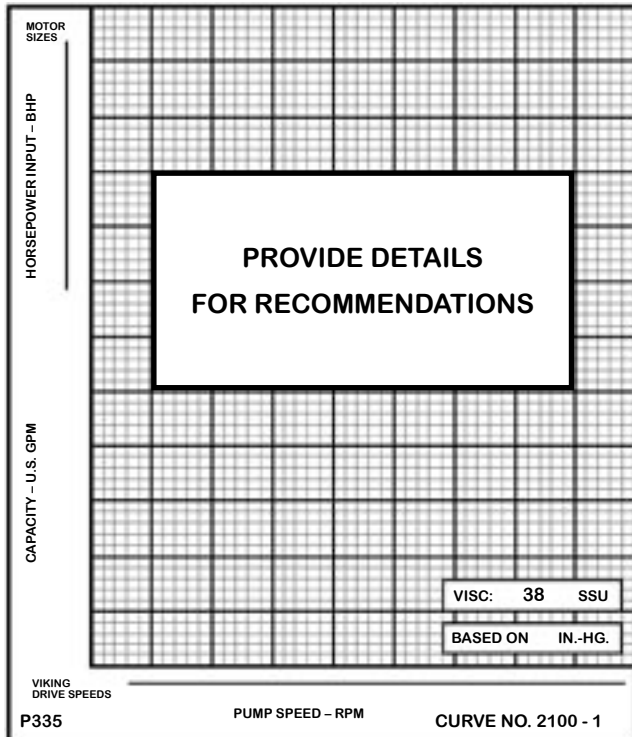
DIMENSIONS AND PERFORMANCE DATA

DIMENSIONS — UNMOUNTED PUMP



These dimensions are average and not for construction purposes. Certified prints on request.

PERFORMANCE DATA



Section	SP2100
Page	4
Issue	B

VIKING® HEAVY DUTY PUMPS

SERIES 335 AND 4335

"P" SIZE

PERFORMANCE DATA

